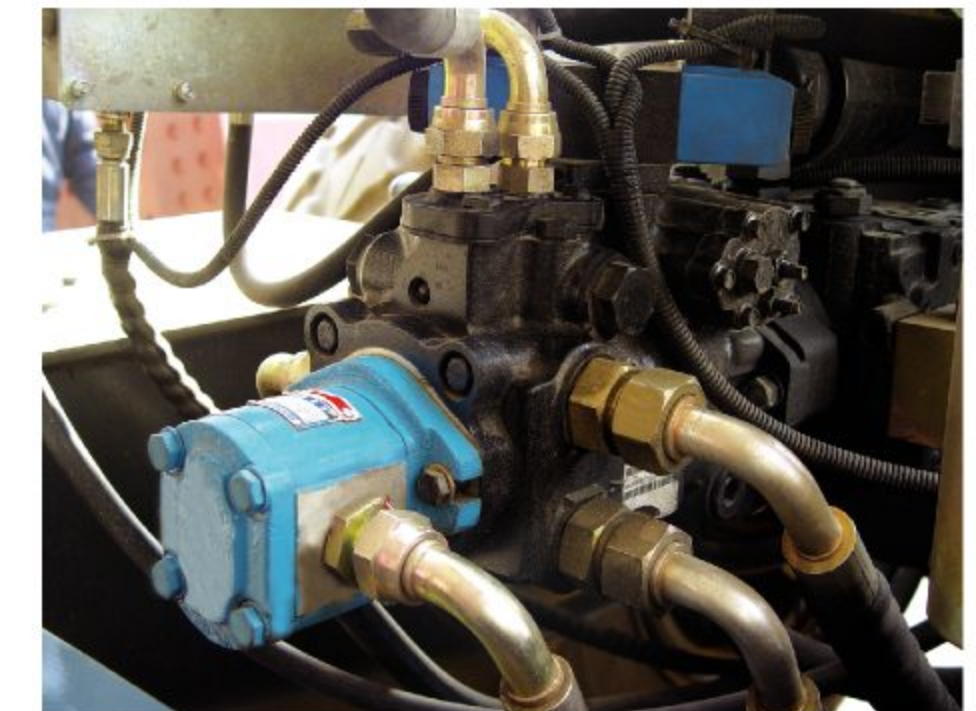


Hydraulic Single Drum Vibratory Rollers

LSD214H/LSD212H/LSD210H



Hydraulic vibratory rollers are suitable for compaction of non-cohesive materials such as gravel, crushed stone, sand-macadam mixture, sandy soil and rock filling etc. on base course, sub-base and embankment fill construction, which are ideal equipment for high-class highway, railway, airport, harbors, dams and large-scale industrial ground.

- Powerful Cummins diesel engine; Optional diesel engine with electronic control.
- Hydrostatic wheel & drum travel drive operated by a single lever at two range infinitely variable speeds.
- Parking brake hydraulically mounted in central input of the driving axle with oil-cutoff braking for reliable safety .
- Circle arc glasses cabin with air conditioner(option) and curve engine hood for unique streamline shape appearance.
- Engine mounted with backward power output and turnover engine hood allow easy access to the main hydraulic components.
- Adjustable frequency and amplitude vibration device with imported pump and motor.

| Model | | LSD214H | LSD212H | LSD210H |
|---------------------|------|--------------------|--------------------|--------------------|
| Operating mass | kg | 14000 | 12000 | 10000 |
| Static linear load | N/cm | 373 | 303 | 242 |
| Vibration amplitude | mm | 1.8/0.9 | 1.8/0.9 | 1.8/0.9 |
| Vibration frequency | Hz | 30/36 | 30/36 | 30/36 |
| Centrifugal force | kN | 290/200 | 270/180 | 250/160 |
| Max. travel speed | km/h | 10 | 10 | 10 |
| Gradeability | % | 40 | 40 | 40 |
| Turning radius | mm | 6500 | 6500 | 6500 |
| Drum width | mm | 2100 | 2100 | 2100 |
| Wheelbase | mm | 3050 | 3050 | 3050 |
| Ground clearance | mm | 472 | 472 | 472 |
| Diesel model | | 6BT5.9 | 6BT5.9 | 6BT5.9 |
| Diesel power | kW | 110 | 110 | 110 |
| Overall dimensions | mm | 6000 × 2250 × 2950 | 6000 × 2250 × 2950 | 6000 × 2250 × 2950 |